

VICADS V100 (VIDEO IMAGE CONTROL AND DISPLAY SYSTEM)

SAFE | SECURE | CERTIFIED

OVERVIEW

The V100 Video Management System (VMS) is the new version of VICADS 4.3 PL1N certified software running on Linux servers and Microsoft Windows "Mini" clients. Linux offers built in redundancy and encryption which allows advanced capabilities to keep the customer ahead of emerging threats. Microsoft Windows is the most widely used platform for the user and works seamlessly with the Linux server so the learning curve is minimized. Combining Linux and Microsoft platforms offers the customer a smaller footprint of hardware, more security, and greater processing capabilities.

The V100 consists of familiar PL1N certified VICADS-4 software hosted on Linux servers providing built-in encryption with advanced capabilities and data fusion keeping the customer ahead of emerging threats. This combined architecture provides high reliability and greater processing power. With Linux servers, serving Windows 10 OS Clients, V100 provides a common graphical user interface with the power of a supercomputer supplying the best of both worlds for our customers!

V100 uses a multi-node cluster model - think high availability Cloud computing- which allows for critical backups, provides a common operating picture for rapid decision making and response, video assessment, and easy installation for protecting critical information and disaster recovery.

V100 has a smaller hardware footprint with a multi-function open platform. Our advanced solution hosts GOTS/COTS developed software applications which condenses physical servers, rack space, complexity, and overall program cost.

Among the add-on integrations is our Cyber Security Solution with:

- DoD Risk Management Framework (RMF) Compliance
- Information Assurance
- Big Data Analytics Integration
- Active Directory Integration
- Inventory Management

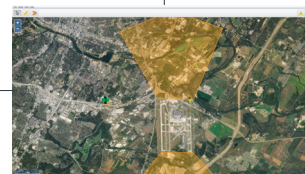
VICADS® System (BDOC)



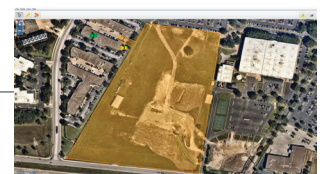
Viewable Cameras:



Building Cameras



Radar Coverage



Intelligent GIS



V100
Cluster

VICADS® Personal Viewer / Softwall / Radar Wall

Flightline Operations



Wing Commander



Building X - Owner User



VICADS Cluster	<p>Sturdy, scalable, serviceable</p> <p>Linux</p> <p>Server/NVR/VBS</p> <p>Scene Authentication</p>	<p>Deployed on 100+ Locations</p> <p>Redundancy and greater processing</p> <p>Smaller hardware footprint</p> <p>Real-time authentication of a video signal from inception (video scene) to the (viewing or storing)</p>
Witness Client	<p>Cyber Security</p> <p>Hybrid Cloud Technology</p> <p>Microsoft Windows</p> <p>Witness Viewer</p> <p>Investigator</p>	<p>New CSA config. Software on server</p> <p>Secure web browser interface for viewing</p> <p>Minimal user training</p> <p>View and control cameras</p> <p>Software tool to view recorded video</p>
Radar Wall/OwlEye	<p>Microsoft Wiindows</p> <p>Radar Wall</p> <p>OwlEye</p>	<p>Minimal user training</p> <p>Geographic information system (GIS) Ground Based Radar (GBR) integration</p> <p>Alarm video call up</p>
Perimeter Intrusion Detection Systems (PIDS)	<p>Softwall for DOE SEIWG</p> <p>Compliant, JIGSAW integration</p>	<p>Government off the Shelf (GOTS) annunciator PL1N (redundant)</p>

SYSTEM NOMENCLATURE & PART NUMBERS		
Part Number	Description	System Functional Description
10-10002-001	VICADS VMS V100 Video Vault Server, Dell	The vault server is the core of the HPC. It provides data storage for security platforms as well as high availability and integration interfaces. They are deployed as single standalone nodes or as a base cluster of three to n nodes for scaling a system.
10-30007-030	VICADS Performance Matched 8TB SAS HDD, self encrypting, Dell	Storage drive added to vault servers to scale data storage
10-30007-031	VICADS Performance Matched 12TB SAS HDD, self encrypting, Dell	Storage drive added to vault servers to scale data storage
10-40000-002	VICADS VMS V100 Combined Server Site Licensing Bundle	Software licensing added to the vault server to enable VICADS 100 VMS
10-30000-002	V100, VICADS View-Only License (per Camera)	Software licensing added to the vault server to enable VICADS 100 VMS functions
10-30000-003	V100, VICADS View/Record License (per Camera)	Software licensing added to the vault server to enable VICADS 100 VMS functions
10-40004-002	V100, Geospatial Mapping Display Site License	Software licensing added to the vault server to enable automated target tracking
10-40004-003	V100 Site Specific Geo Database	Software licensing added to the vault server to enable site specific GIS database
HARDWARE SPECIFICATIONS (Specifications subject to change without notice)		
Specification	AMD Description	INTEL Description
Operating System	Ubuntu server 20.04.7 LTS	Ubuntu server 20.04.7 LTS
Processor	(2) AMD EPYC 7302 3.0Ghz, 16C/32T, 128M Cache, 155W, DDR4-3200	(2) Intel Xeon Gold 5218 2.3G, 16C/32T, 10.4GT/s, 22M Cache, Turbo, HT (125W) DDR4-2666
Memory	(4) 32GB RDIMM, 3200MT/s, Dual Rank 8Gb BASE	(6) 16GB RDIMM, 3200MT/s, Dual Rank
RAID Controller	Perc H745 Adapter	Perc H750 Adapter
O/S Drives	(2) 2.4TB 10K RPM Self-Encrypting SAS 12Gbps 512e 2.5in Flex Bay Hard Drive, FIPS SED140 SED {or comparable SAS/SSD/Nvme}	(2) 960GB Solid State Drive SAS MU FIPS-140 PM6 512e 2.5in Flex Bay 3 DWPD {or comparable SAS/SSD/Nvme}
Storage Options	(12 optional) Chassis up to 12x3.5" HDDs (12X 3.5) + Rear 2X 2.5 SAS/SATA with XGMI	(12 optional) Chassis up to 12x3.5" HDDs on BP, No Mid-Bay and 4x2.5" HDDs Flexbay, 1 or 2CPU Config, PERC/HBA11
Networking	Broadcom 5720 Quad Port 1GbE BASE-T, rNDC	Intel Ethernet i350 Quad Port 1GbE BASE-T Adapter, PCIe Low Profile
Power Supply	Dual, Hot-plug, Redundant Power Supply (1+1), 1100W Power Cord - C13, 3M, 125V, 15A (North America, Guam, North Marianas, Philippines, Samoa, Vietnam)	Dual, Hot-plug, Redundant Power Supply (1+1), 1100W Power Cord - C13, 3M, 125V, 15A (North America, Guam, North Marianas, Philippines, Samoa, Vietnam)
Security Features	TPM 2.0, PowerEdge 2U Standard Bezel, Self encrypting drives, Keep Your Hard Drive, 3 Year	TPM 2.0, PowerEdge 2U Standard Bezel, Self encrypting drives, Keep Your Hard Drive, 3 Year
Management Features	iDRAC9,Enterprise, ProSupport and Next Business Day Onsite Service Initial, 36 Month(s)	iDRAC9,Enterprise, ProSupport and Next Business Day Onsite Service Initial, 36 Month(s)
MECHANICAL AND ENVIRONMENTAL SPECIFICATIONS (Specifications subject to change without notice)		
Specification	AMD Description	INTEL Description
Chassis	PowerEdge R7525 Server	PowerEdge R740XD Server
Operating Temperature/Humidity	50-95° F (10-35 C) / 8-90% RH non-condensing	50-95° F (10-35 C) / 8-90% RH non-condensing
Power Consumption	1100W Maximum Peak Power per supply (2200W)	1100W Maximum Peak Power per supply (2200W)
Cooling Requirements	7505 BTU/hr	7505 BTU/hr
Dimensions	2RU, Height: 3.4" (86.8mm), Width: 17.1" (434.0mm), Depth: 29.0" (737.5mm)	2RU, Height: 3.4" (86.8mm), Width: 17.1" (434.0mm), Depth: 29.0" (737.5mm)
Weight	Maximum 80.02 lbs (36.3kg)	Maximum 73.0 lbs (33.1kg)
Physical Security	2U LOCKING BEZEL	2U LOCKING BEZEL
Rack Rail Kit	INCLUDED	INCLUDED
Supply Chain Standards	TAA Compliant	TAA Compliant

MECHANICAL AND ENVIRONMENTAL SPECIFICATIONS (Specifications subject to change without notice)		
Specification	AMD Description	INTEL Description
Chassis	PowerEdge R7525 Server	PowerEdge R740XD Server
Operating Temperature/Humidity	50-95° F (10-35 C) / 8-90% RH non-condensing	50-95° F (10-35 C) / 8-90% RH non-condensing
Power Consumption	800W Maximum Peak Power per supply (1600W)	750W Maximum Peak Power per supply (1500W)
Cooling Requirements	5500 BTU/hr	5200 BTU/hr
Dimensions	2RU, Height: 3.4" (86.8mm), Width: 17.1" (434.0mm), Depth: 29.0" (737.5mm)	2RU, Height: 3.4" (86.8mm), Width: 17.1" (434.0mm), Depth: 29.0" (737.5mm)
Weight	Maximum 80.02 lbs (36.3kg)	Maximum 73.0 lbs (33.1kg)
Physical Security	2U LOCKING BEZEL	2U LOCKING BEZEL
Rack Rail Kit	INCLUDED	INCLUDED
Supply Chain Standards	TAA Compliant	TAA Compliant

VICADS VMS Video Client Workstation, Tower, Dell

Part Number+A2:C27	Description	System Functional Description
10-20007-001	VICADS VMS Video Client Workstation, Tower, Dell	This is a video client workstation for running the OwlEye or Witness applications for surveillance, dynamic video switching or automated target tracking via the radar wall functions of the VICADS V100 VMS. This version is specifically setup to handle up to four 1080P monitors and 1080P up to 4K video.
10-40002-001	V100, OwlEye Software License (Softwall)	This is software added to the client workstation to enable the OwlEye software functions.
10-40001-001	V100, Witness Software License (Personal Viewer)	This is software added to the client workstation to enable the Witness & Investigator software functions.

HARDWARE SPECIFICATIONS (Specifications subject to change without notice)

Specification	Description
Operating System	Windows 10 IoT Enterprise LTSC High End PKEA
Processor	Intel Xeon Processor W-2235 (6C 3.8GHz 4.6GHz Turbo HT 8.25MB 130W DDR4-2933)
Memory	(2) 16GB DDR4 2666MHz RDIMM ECC Memory
O/S Drives	(1) 2.5" 512GB SATA Class 20 Solid State Drive {or comparable SAS/SSD/Nvme}
Graphics Card	(1) Nvidia Quadro RTX4000, 8GB, 3DP, VirtualLink (XX20T)
Networking	(1) 1Gbit NIC add-in card (PCIe- Intel)
Peripherals	ENERGY STAR Qualified, Dell KB813 Smart Card Keyboard (US), Dell Optical Mouse - MS116 (Black),US Power Cord
Security Features	Trusted Platform Module (TPM 2.0); chassis Intrusion switch; Setup/BIOS Password; I/O Interface Security; lockable front bezel, Dell Data Guardian, Dell Endpoint Security Suite
Management Features	ProSupport Plus: Next Business Day Onsite, 3 Years, 7x24 Technical Support, 3 Years, Accidental Damage Service, 3 Years , Keep Your Hard Drive, 3 Years

MECHANICAL AND ENVIRONMENTAL SPECIFICATIONS (Specifications subject to change without notice)

Specification	Description
Chassis	Precision 5820 Tower XCTO Base
Operating Temperature/Humidity	50-95° F (10-35 C) / 8-90% RH non-condensing
Power Consumption	950W Maximum Peak Power
Cooling Requirements	3250 BTU/hr
Dimensions	HxWxD: 16.45" (417.9 mm) 6.95" (176.5 mm) 20.4" (518.2 mm)
Weight	34lb (15.4 kg)
Supply Chain Standards	TAA Compliant

SYSTEM NOMENCLATURE & PART NUMBERS		
Part Number	Description	System Functional Description
10-10003-001	VICADS VMS V100 Analytics Vault Server, Dell	The analytics server is the core of the data and video analytics engine. It provides specialized processing and AI/ML features. They are deployed as nodes within an existing cluster of three to n nodes.
10-30007-030	VICADS Performance Matched 8TB SAS HDD, self encrypting, Dell	Storage drive added to vault servers to scale data storage
10-30007-031	VICADS Performance Matched 12TB SAS HDD, self encrypting, Dell	Storage drive added to vault servers to scale data storage
10-40005-000	VICADS Scene Authentication License, Per Camera	Software licensing added to the vault server to enable Scene Authentication in Servers
10-40005-001	Scene Authentication Channel License, Per Camera	Software licensing added to the vault server to enable Scene Authentication in Edge Devices
10-31000-001	VICADS Video Analytics License, Per Camera	Software licensing added to the vault server to enable video analytics functions
10-31000-002	VICADS Video Analytics Year 1 Customer Care, Per Camera	Annual subscription to software updates
HARDWARE SPECIFICATIONS (Specifications subject to change without notice)		
Specification	AMD Description	INTEL Description
Operating System	Ubuntu server 20.04.7 LTS	Ubuntu server 20.04.7 LTS
Processor	(2) AMD EPYC 7413 2.65GHz,24C/48T,128M,180W,3200	(2) Intel Xeon Gold 6136 3.0G, 12C/24T, 10.4GT/s , 24.75M Cache, Turbo, HT (150W) DDR4-2666
Memory	(6) 16GB RDIMM, 3200MT/s, Dual Rank	(6) 16GB RDIMM, 3200MT/s, Dual Rank
RAID Controller	PERC H745 Controller, Front	PERC H730P RAID Controller, 2GB NV Cache, Mini card
O/S Drives	(2) 2.4TB 10K RPM Self-Encrypting SAS 12Gbps 512e 2.5in Hot-plug Hard Drive, FIPS SED140 SED {or comparable SAS/SSD/Nvme}	(2) 480GB SSD SATA Mixed Use 6Gbps 512e 2.5in Hot Plug S4610 Drive {or comparable SAS/SSD/Nvme}
Storage Options	(6 optional) 2.5 Chassis with up to 8 Hard Drives and 3PCIe slots	(6 optional) 2.5 Chassis with up to 8 Hard Drives and 3PCIe slots
Networking	Broadcom 5720 Quad Port 1GbE BASE-T, rNDC	Broadcom 5720 Quad Port 1GbE BASE-T, rNDC
Power Supply	Dual, Hot-plug, Redundant Power Supply (1+1), 750W Power Cord - C13, 3M, 125V, 15A (North America, Guam, North Marianas, Philippines, Samoa, Vietnam)	Dual, Hot-plug, Redundant Power Supply (1+1), 750W Power Cord - C13, 3M, 125V, 15A (North America, Guam, North Marianas, Philippines, Samoa, Vietnam)
Security Features	TPM 2.0, PowerEdge 2U Standard Bezel, Self encrypting drives, Keep Your Hard Drive, 3 Year	TPM 2.0, PowerEdge 2U Standard Bezel, Self encrypting drives, Keep Your Hard Drive, 3 Year
Management Features	iDRAC9,Enterprise, ProSupport and Next Business Day Onsite Service Initial, 36 Month(s)	iDRAC9,Enterprise, ProSupport and Next Business Day Onsite Service Initial, 36 Month(s)
MECHANICAL AND ENVIRONMENTAL SPECIFICATIONS (Specifications subject to change without notice)		
Specification	AMD Description	INTEL Description
Chassis	PowerEdge R6525 Server	PowerEdge R640 Server
Operating Temperature/Humidity	50-95° F (10-35 C) / 8-90% RH non-condensing	50-95° F (10-35 C) / 8-90% RH non-condensing
Power Consumption	800W Maximum Peak Power per supply (1600W)	750W Maximum Peak Power per supply (1500W)
Cooling Requirements	5500 BTU/hr	5200 BTU/hr
Dimensions	Height: 42.8mm (1.69") Width*: 482.0mm (18.98") Depth*: 808.5mm (31.8")	Height: 42.8mm (1.69") Width*: 482.0mm (18.98") Depth*: 808.5mm (31.8")
Weight	Weight: 21.9kg (48.3 lbs.)	Weight: 21.9kg (48.3 lbs.)
Physical Security	2U LOCKING BEZEL	2U LOCKING BEZEL
Rack Rail Kit	INCLUDED	INCLUDED
Supply Chain Standards	TAA Compliant	TAA Compliant



SYSTEM NOMENCLATURE & PART NUMBERS		
Part Number	Description	System Functional Description
10-20009-001	VICADS VMS Video Client Workstation, Tower, 4k Variant, Dell	This is a video client workstation for running the OwlEye or Witness applications for surveillance, dynamic video switching or automated target tracking via the radar wall functions of the VICADS V100 VMS. This version is specifically setup to handle up to four 4K monitors and 1080P up to 4K video.
10-40002-001	V100, OwlEye Software License (Softwall)	This is software added to the client workstation to enable the OwlEye software functions.
10-40001-001	V100, Witness Software License (Personal Viewer)	This is software added to the client workstation to enable the Witness & Investigator software functions.
HARDWARE SPECIFICATIONS (Specifications subject to change without notice)		
Specification	Description	
Operating System	Windows 10 IoT Enterprise LTSC High End PKEA	
Processor	11th Generation Intel Xeon W-1350P, 12 MB Cache, 6 Core, 4.0 GHz to 5.1 GHz, 125W TDP	
Memory	(2) 16GB, DDR4 UDIMM ECC memory	
O/S Drives	(1) 512GB PCIe NVMe Class 40 Self Encrypting M.2 SSD {or comparable SAS/SSD/Nvme}	
Graphics Card	Nvidia RTX A4000, 16GB, 4DP (Precision 3650T)	
Networking	(2) 2.5G Ethernet LAN (RJ45) Port	
Peripherals	ENERGY STAR Qualified, Dell KB813 Smart Card Keyboard (US), Dell Optical Mouse - MS116 (Black),US Power Cord	
Security Features	Trusted Platform Module (TPM 2.0); chassis Intrusion switch; Setup/BIOS Password; I/O Interface Security; lockable front bezel, Dell Data Guardian, Dell Endpoint Security Suite	
Management Features	ProSupport Plus: Next Business Day Onsite, 3 Years, 7x24 Technical Support, 3 Years, Accidental Damage Service, 3 Years , Keep Your Hard Drive, 3 Years	
MECHANICAL AND ENVIRONMENTAL SPECIFICATIONS (Specifications subject to change without notice)		
Specification	Description	
Chassis	Precision 3650 Tower CTO BASE	
Operating Temperature/Humidity	50-95° F (10-35 C) / 8-90% RH non-condensing	
Power Consumption	1000W Maximum Peak Power	
Cooling Requirements	3425 BTU/hr	
Dimensions	HxWxD: 13.19 in. (335.0 mm) 6.95 in. (176.6 mm) 13.58 in. (345.0 mm)	
Weight	18.74 lb (8.5 kg)	
Supply Chain Standards	TAA Compliant	

SYSTEM NOMENCLATURE & PART NUMBERS		
Part Number	Description	System Functional Description
10-20011-001	VICADS VMS Video Client Workstation, Tower, 4k Variant, Dell	This is a video client workstation for running the OwlEye or Witness applications for surveillance, dynamic video switching or automated target tracking via the radar wall functions of the VICADS V100 VMS. This version is specifically setup to handle up to eight 4K monitors and 1080P up to 4K video.
10-40002-001	V100, OwlEye Software License (Softwall)	This is software added to the client workstation to enable the OwlEye software functions.
10-40001-001	V100, Witness Software License (Personal Viewer)	This is software added to the client workstation to enable the Witness & Investigator software functions.
HARDWARE SPECIFICATIONS (Specifications subject to change without notice)		
Specification	Description	
Operating System	Windows 10 IoT Enterprise LTSC High End PKEA	
Processor	11th Generation Intel Xeon W-1350P, 12 MB Cache, 6 Core, 4.0 GHz to 5.1 GHz, 125W TDP	
Memory	(2) 16GB, DDR4 UDIMM ECC memory	
O/S Drives	(1) 512GB PCIe NVMe Class 40 Self Encrypting M.2 SSD {or comparable SAS/SSD/Nvme}	
Graphics Card	(2) Nvidia RTX A4000, 16GB, 4DP (Precision 3650T)	
Networking	(2) 2.5G Ethernet LAN (RJ45) Port	
Peripherals	ENERGY STAR Qualified, Dell KB813 Smart Card Keyboard (US), Dell Optical Mouse - MS116 (Black),US Power Cord	
Security Features	Trusted Platform Module (TPM 2.0); chassis Intrusion switch; Setup/BIOS Password; I/O Interface Security; lockable front bezel, Dell Data Guardian, Dell Endpoint Security Suite	
Management Features	ProSupport Plus: Next Business Day Onsite, 3 Years, 7x24 Technical Support, 3 Years, Accidental Damage Service, 3 Years , Keep Your Hard Drive, 3 Years	
MECHANICAL AND ENVIRONMENTAL SPECIFICATIONS (Specifications subject to change without notice)		
Specification	Description	
Chassis	Precision 3650 Tower CTO BASE	
Operating Temperature/Humidity	50-95° F (10-35 C) / 8-90% RH non-condensing	
Power Consumption	1000W Maximum Peak Power	
Cooling Requirements	3425 BTU/hr	
Dimensions	HxWxD: 13.19 in. (335.0 mm) 6.95 in. (176.6 mm) 13.58 in. (345.0 mm)	
Weight	18.74 lb (8.5 kg)	
Supply Chain Standards	TAA Compliant	

SYSTEM NOMENCLATURE & PART NUMBERS		
Part Number	Description	System Functional Description
10-01002-001	VICADS VMS 4K Video Client Workstation, Rack Mount, Dell	This is a video client workstation for running the OwlEye or Witness applications for surveillance, dynamic video switching or automated target tracking via the radar wall functions of the VICADS V100 VMS. This version is specifically setup to handle up to four 4K monitors and 1080P up to 4K video in a 1RU form factor.
10-40002-001	V100, OwlEye Software License (Softwall)	This is software added to the client workstation to enable the OwlEye software functions.
10-40001-001	V100, Witness Software License (Personal Viewer)	This is software added to the client workstation to enable the Witness & Investigator software functions.
HARDWARE SPECIFICATIONS (Specifications subject to change without notice)		
Specification	Description	
Operating System	Windows 10 IoT Enterprise LTSC High End PKEA	
Processor	Intel Xeon E-2246G,(6 Core, 12MB Cache, 3.6Ghz, 4.8Ghz Turbo w/UHD Graphics 630)	
Memory	(4) 8GB DDR4 UDIMM ECC Memory	
O/S Drives	(1) M.2 256GB SED OPAL PCIe NVMe Class 40 Solid State Drive {or comparable SAS/SSD/Nvme}	
Graphics Card	(1) Nvidia Quadro RTX5000, 16GB, 4DP, VirtualLink (3930R)	
Networking	(1) Intel I210 1Gb Ethernet Adapter (1X1GbE)	
Peripherals	ENERGY STAR Qualified, Dell KB813 Smart Card Keyboard (US), Dell Optical Mouse - MS116 (Black),US Power Cord	
Security Features	Trusted Platform Module (TPM 2.0); chassis Intrusion switch; Setup/BIOS Password; I/O Interface Security; lockable front bezel, Dell Data Guardian,	
Management Features	ProSupport Plus: Next Business Day Onsite, 3 Years, 7x24 Technical Support, 3 Years, Accidental Damage Service, 3 Years , Keep Your Hard Drive, 3 Years	
ANICAL AND ENVIRONMENTAL SPECIFICATIONS (Specifications subject to change without n		
Specification	Description	
Chassis	Precision 3930 Rack XCTO Base	
Operating Temperature/Humidity	50-95° F (10-35 C) / 8-90% RH non-condensing	
Power Consumption	550W Maximum Peak Power	
Cooling Requirements	1900 BTU/hr	
Dimensions	HxWxD: 1RU - 1.68" (42.8 mm) x 18.98" (482.0 mm) x 23.19" (589.1 mm) with Bezel or 22.74" (577.6 mm)	
Weight	19.27 lb (8.74 kg)	
Rack Rails	ReadyRails Static Rails Without Cable Management Arm	
Supply Chain Standards	TAA Compliant	



SYSTEM NOMENCLATURE & PART NUMBERS		
Part Number	Description	System Functional Description
10-20008-001	VICADS VMS Video Client Workstation, Mini, Dell	This is a video client workstation for running the OwlEye or Witness applications for surveillance, dynamic video switching or automated target tracking via the radar wall functions of the VICADS V100 VMS. This version is specifically setup to handle up to two 1080P monitors and 1080P up to 4K video.
10-40002-001	V100, OwlEye Software License (Softwall)	This is software added to the client workstation to enable the OwlEye software functions.
10-40001-001	V100, Witness Software License (Personal Viewer)	This is software added to the client workstation to enable the Witness & Investigator software functions.
HARDWARE SPECIFICATIONS (Specifications subject to change without notice)		
Specification	Description	
Operating System	Windows 10 IoT Enterprise LTSC High End PKEA	
Processor	Intel Core i5-10600 (6 Core, 12M cache, base 3.3GHz, up to 4.8GHz) DDR4-2666	
Memory	(2) 8GB DDR4 2666MHz or 2933MHz (2933MHz requires Intel Core i7 or above) UDIMM Non-ECC Memory	
O/S Drives	(1) 512GB PCIe NVMe Class 40 M.2 SSD {or comparable SAS/SSD/Nvme}	
Graphics Card	(1) NVIDIA Quadro P620, 2GB, 4 mDP to DP adapter	
Networking	(1) Intel 1Gb NIC PCIe Card (Low Profile)	
Peripherals	ENERGY STAR Qualified, Dell KB813 Smart Card Keyboard (US), Dell Optical Mouse - MS116 (Black),US Power Cord	
Security Features	Trusted Platform Module (TPM 2.0); chassis Intrusion switch; Setup/BIOS Password; I/O Interface Security; lockable front bezel, Dell Data Guardian, Dell Endpoint Security Suite	
Management Features	ProSupport Plus: Next Business Day Onsite, 3 Years, 7x24 Technical Support, 3 Years, Accidental Damage Service, 3 Years , Keep Your Hard Drive, 3 Years	
MECHANICAL AND ENVIRONMENTAL SPECIFICATIONS (Specifications subject to change without notice)		
Specification	Description	
Chassis	Precision 3440 SFF CTO BASE	
Operating Temperature/Humidity	50-95° F (10-35 C) / 8-90% RH non-condensing	
Power Consumption	200W Maximum Peak Power	
Cooling Requirements	700 BTU/hr	
Dimensions	HxWxD: 290 mm (11.42 in.) 92.6 mm (3.65 in.) 292.8 mm (11.53 in.)	
Weight	5.59 kg (12.32 lb)	
Supply Chain Standards	TAA Compliant	

